

## Henderson Way, Horsham

Guide Price £325,000

🛏️ 2 🚿 1 🚗 1

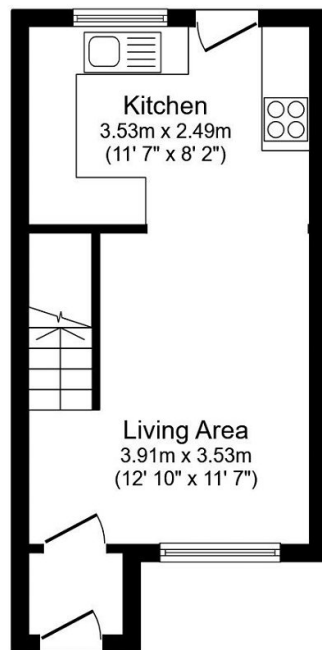


A greatly improved Semi Detached Home tucked away at the end of a small cul de sac boasting a 21ft open plan Kitchen/Living Area and attractive Garden.

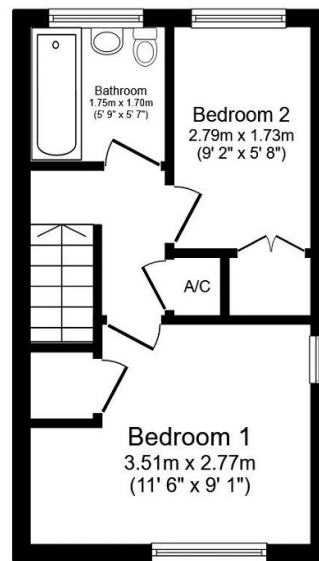
Tenure - Freehold  
Council Tax Band - B  
EPC - Current E - Potential B

## Key Features

- Semi Detached House
- 21ft Open Plan Living Area
- Allocated Parking
- Excellent Storage
- Popular School Catchment
- Greatly Improved Home
- Cul De Sac Location
- Next To Open Fields
- Attractive Rear Garden
- Bathroom With Window



**Ground Floor**  
Floor area 24.3 m<sup>2</sup> (262 sq.ft.)



**First Floor**  
Floor area 23.0 m<sup>2</sup> (247 sq.ft.)

**TOTAL: 47.3 m<sup>2</sup> (509 sq.ft.)**

This floor plan is for illustrative purposes only. It is not drawn to scale. Any measurements, floor areas (including any total floor area), openings and orientations are approximate. No details are guaranteed, they cannot be relied upon for any purpose and do not form any part of any agreement. No liability is taken for any error, omission or misstatement. A party must rely upon its own inspection(s). Powered by [www.Propertybox.io](http://www.Propertybox.io)